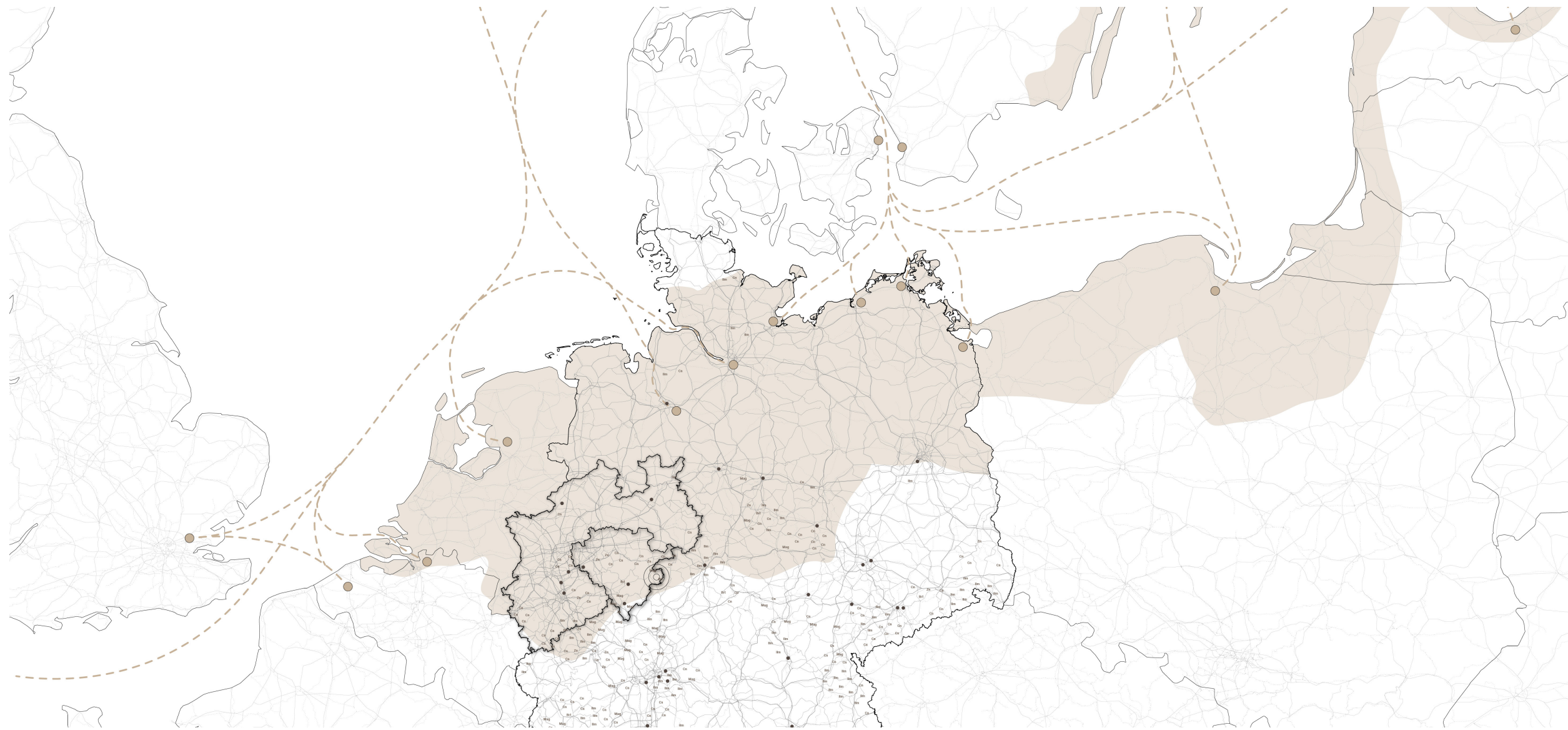





Reinventing Referinghausen / Fall 2022 / Tiana Kimball





“In 1717, **a blacksmith**, a miller, a shepherd, a swineherd, two wool and sheep merchants, two brandy distillers, two tailors, **three smelter masters and six smelter workers lived in Referinghausen**. The iron processing companies that manufactured axes, hoes, scythes and other agricultural implements settled through the iron smelting companies in Niedersfeld and Assinghausen. The hardware trade that developed from this was also widespread locally.”



## SCHMIEDESCHULE

### School

---

Student Forge	15	(115)	1,725 SF
Classroom	01	(400)	400 SF
Library	01	(100)	100 SF
Study Room	01	(400)	400 SF
Lockers	15	(10)	150 SF

### Support

---

Kitchen	01	(300)	300 SF
Storage	03	(100)	300 SF
Restroom	08	(75)	600 SF

Mechanical 03 (100) 300 SF

### Professional Forge

---

Forge	01	(400)	400 SF
Woodshop	01	(400)	400 SF
Design Center	01	(400)	400 SF
Shipping Center	01	(200)	200 SF
Retail Showroom	01	(500)	500 SF

### Administration

---

Open Office	01	(500)	500 SF
Meeting Room	01	(200)	200 SF
Copy/Print	01	(75)	75 SF

Circulation 15% 1,050 SF

---

**8,000 SF**





TITMARINGHAUSEN

DUDINGHAUSEN

REFERINGHAUSEN

OBERSCHLEDORN

DEIFELD





TITMARINGHAUSEN

DUDINGHAUSEN

REFERINGHAUSEN

OBERSCHLEDORN

DEIFELD







TITMARINGHAUSEN

DUDINGHAUSEN

REFERINGHAUSEN

DEIFELD

OBERSCHLEDORN





TITMARINGHAUSEN

DUDINGHAUSEN

REFERINGHAUSEN

DEIFELD

OBERSCHLEDORN





DUDINGHAUSEN



TITMARINGHAUSEN



REFERINGHAUSEN



OBERSCHLEDORN



DELFELD





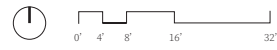








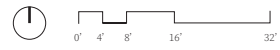




FLOOR PLAN - LEVEL 2

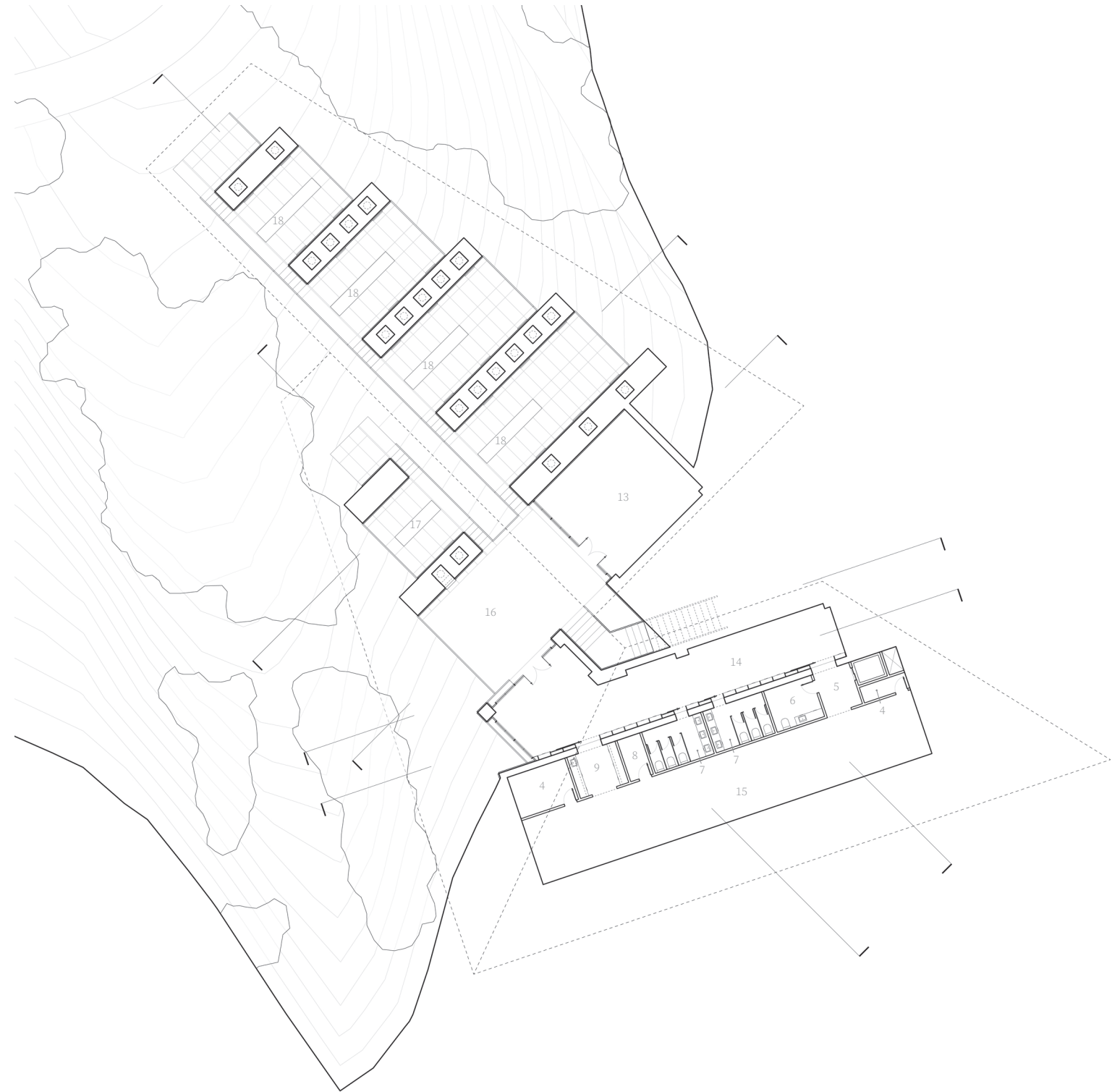
- 1 RETAIL SHOWROOM
- 2 LIBRARY & STUDY ROOM
- 3 CLASSROOM
- 4 STORAGE
- 5 ELEVATOR LOBBY
- 6 ACCESSIBLE W/C
- 7 RESTROOM
- 8 MECHANICAL
- 9 KITCHEN
- 10 CONFERENCE ROOM
- 11 OPEN OFFICE
- 12 SHIPPING

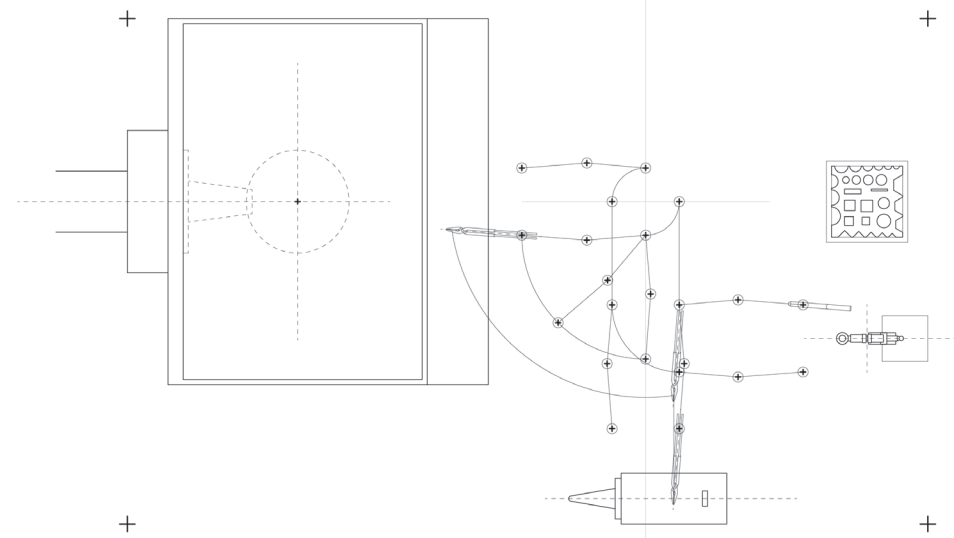
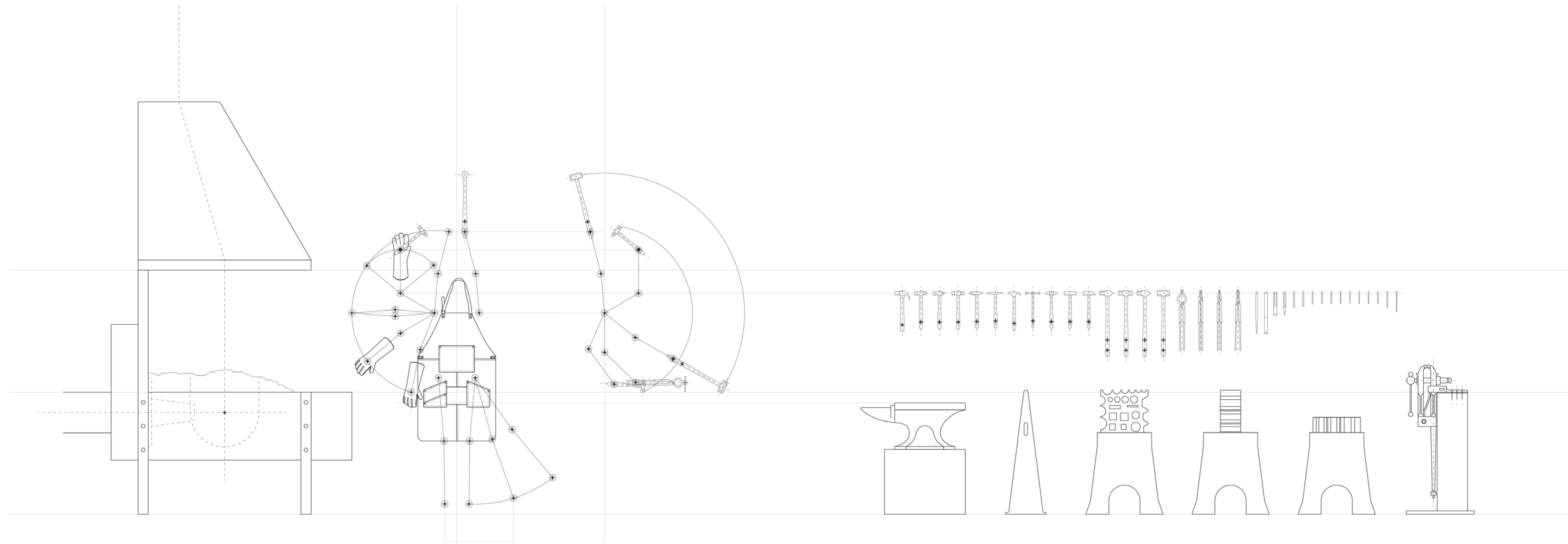


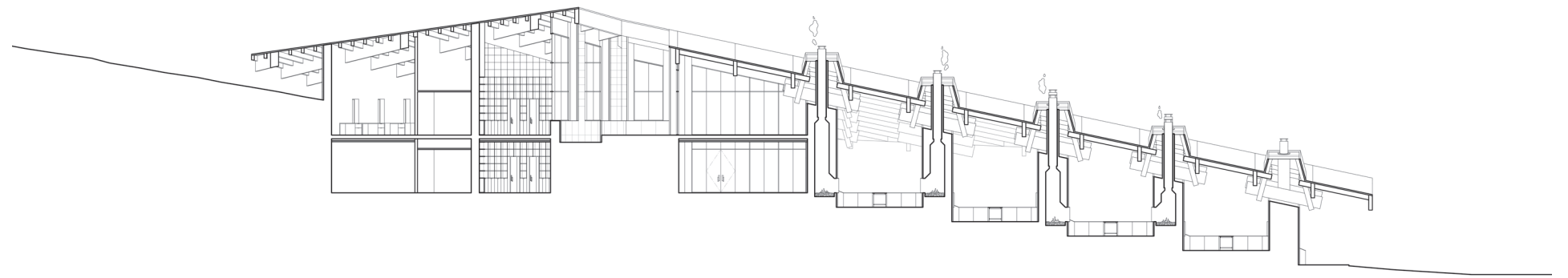
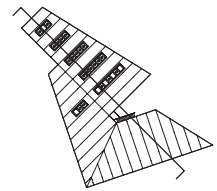


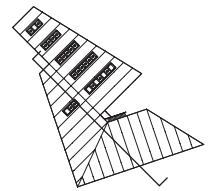
FLOOR PLAN - LEVEL 1

- 4 STORAGE
- 5 ELEVATOR LOBBY
- 6 ACCESSIBLE W/C
- 7 RESTROOM
- 8 MECHANICAL
- 9 KITCHEN
- 13 WOOD SHOP
- 14 TOOL & MATERIAL STORAGE
- 15 DESIGN CENTER
- 16 DEMONSTRATION FORGE
- 17 PROFESSIONAL FORGE
- 18 STUDENT FORGE

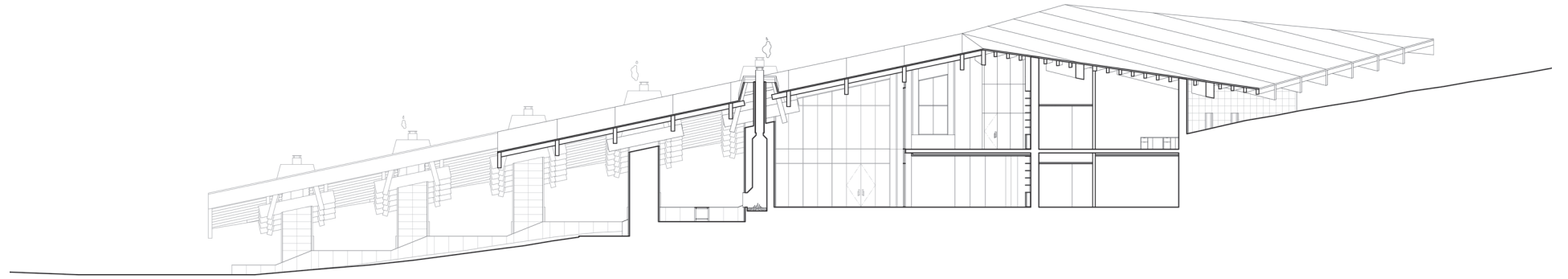


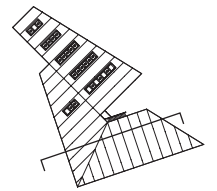




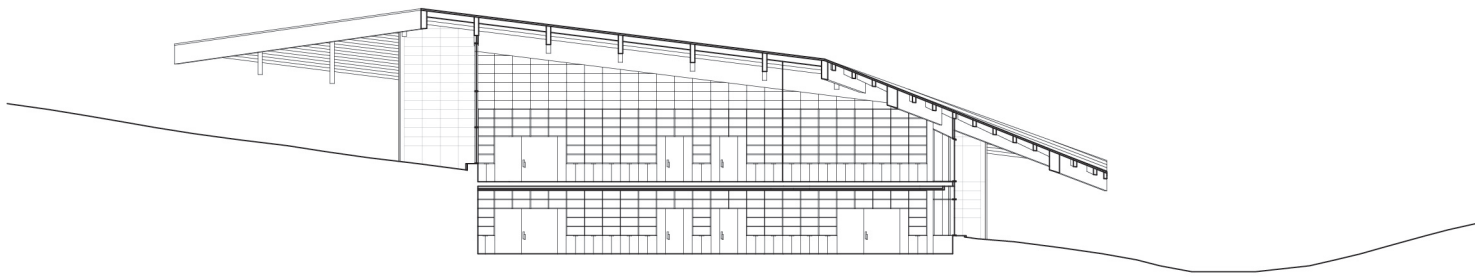


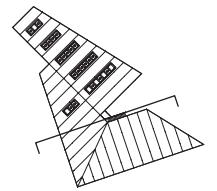
0' 4' 8' 16' 32'



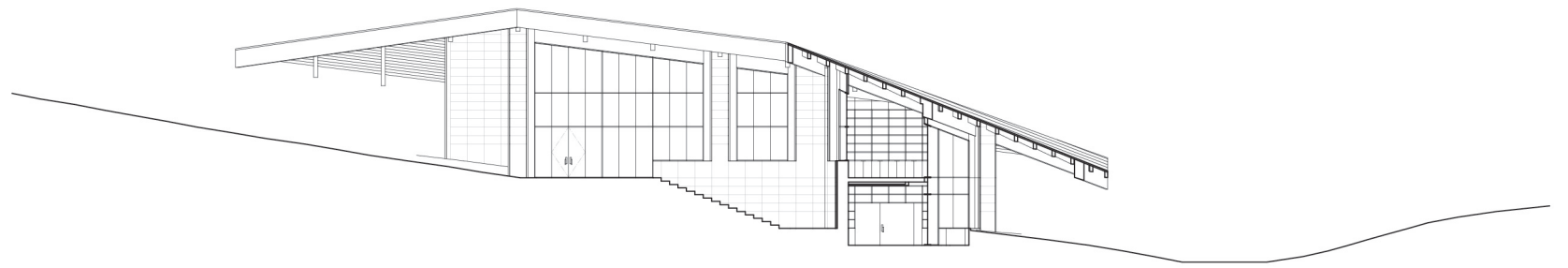


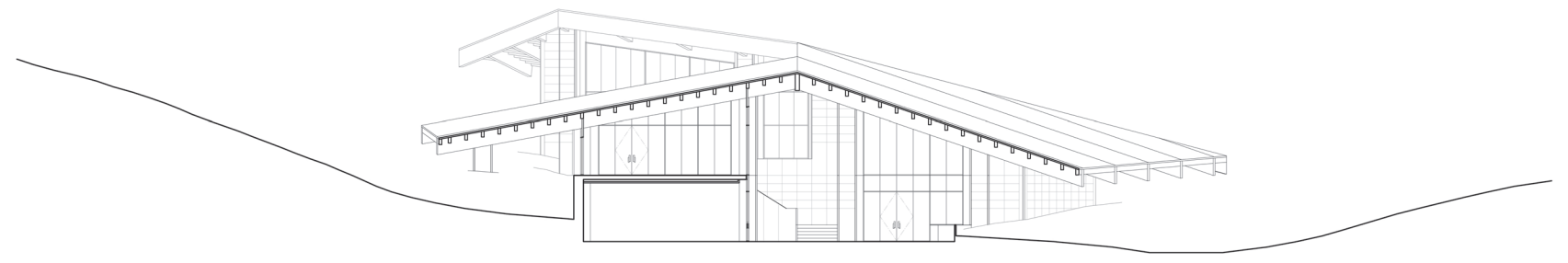
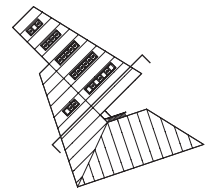
0' 4' 8' 16' 32'



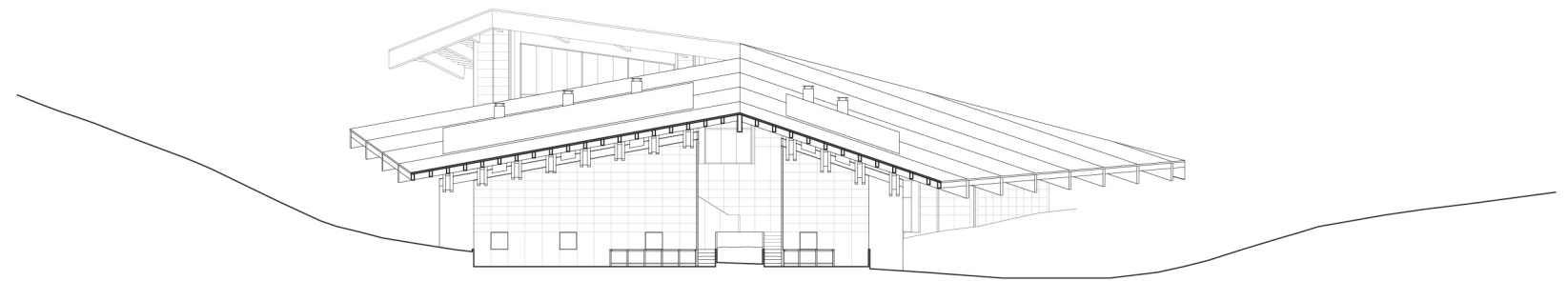
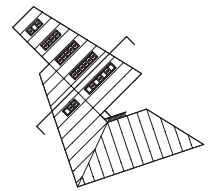


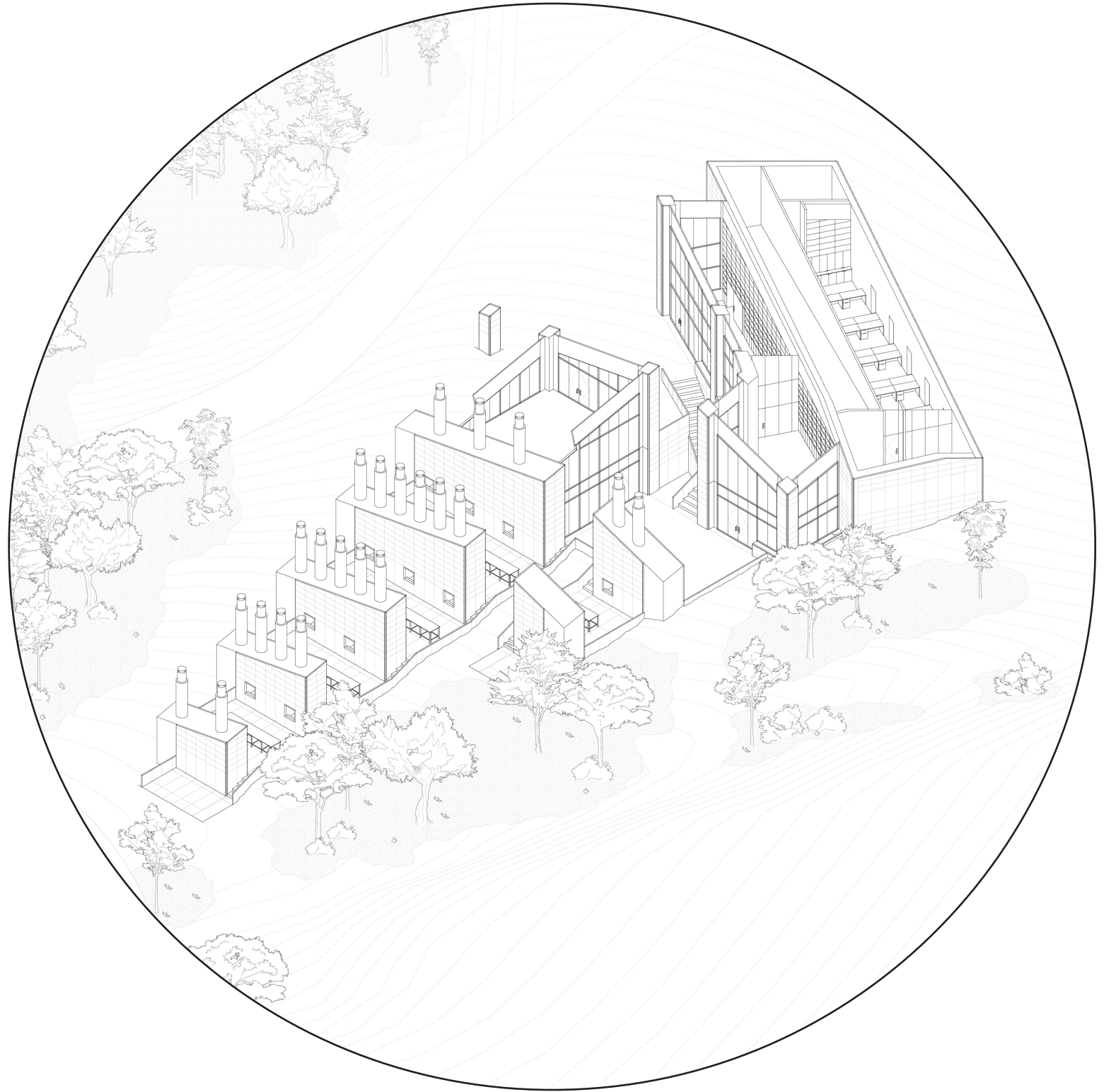
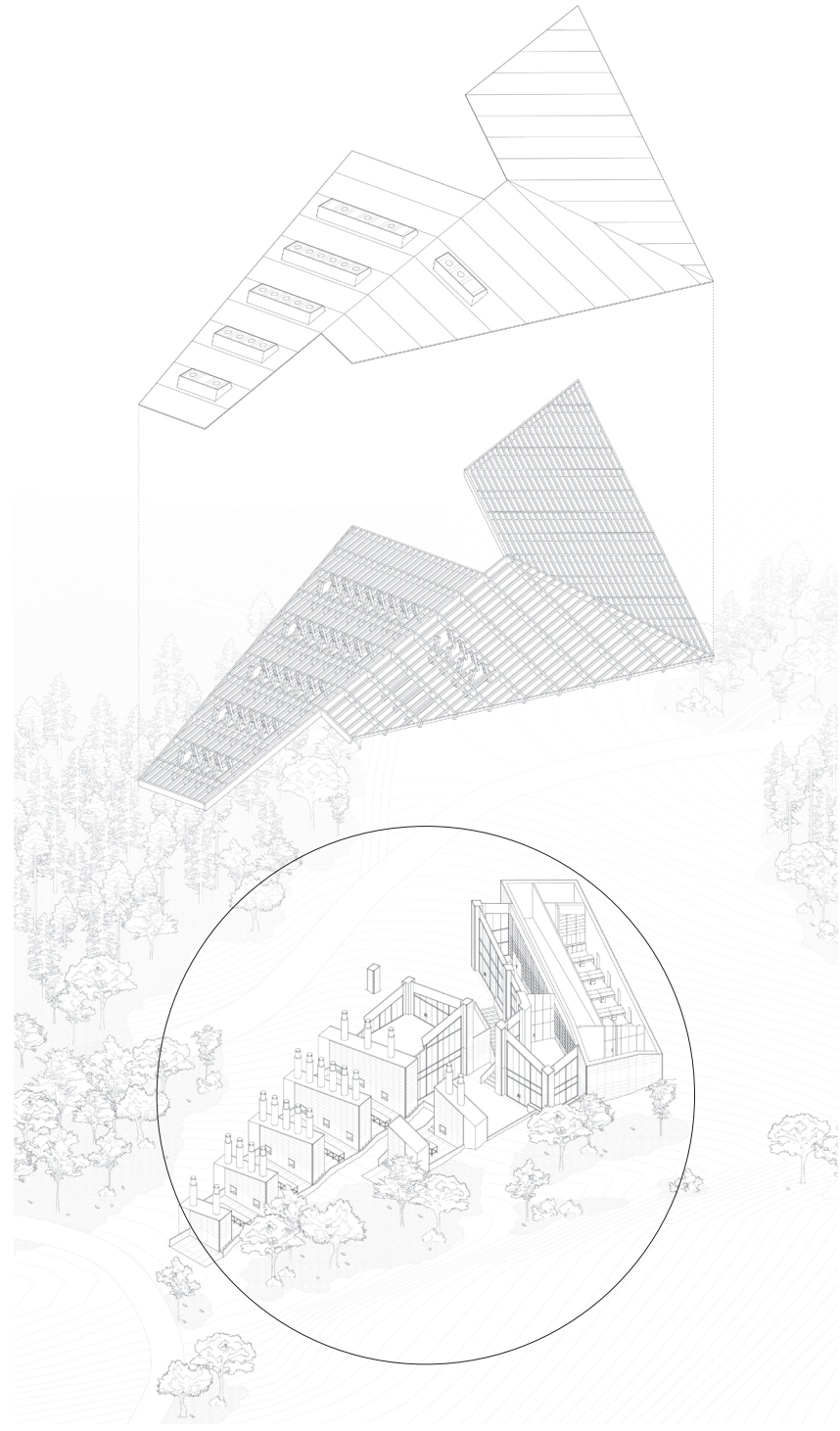
0' 4' 8' 16' 32'

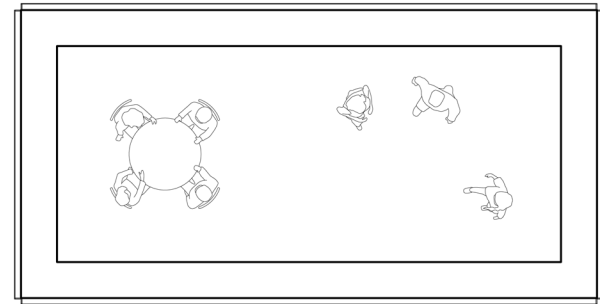
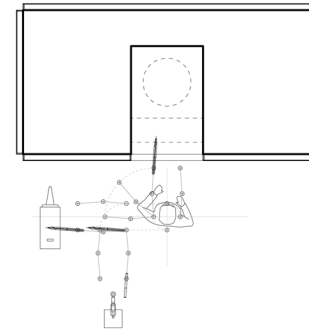
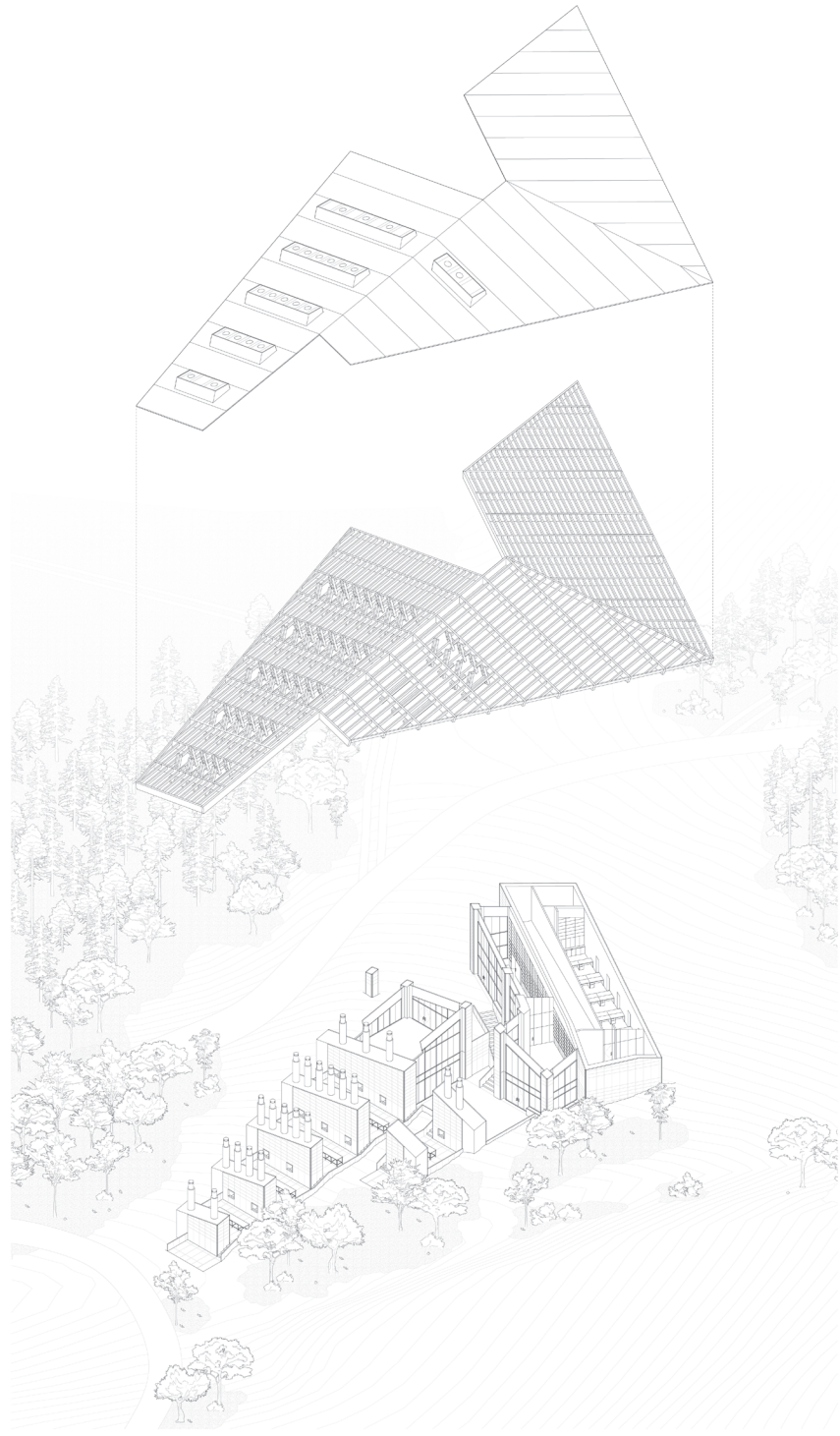


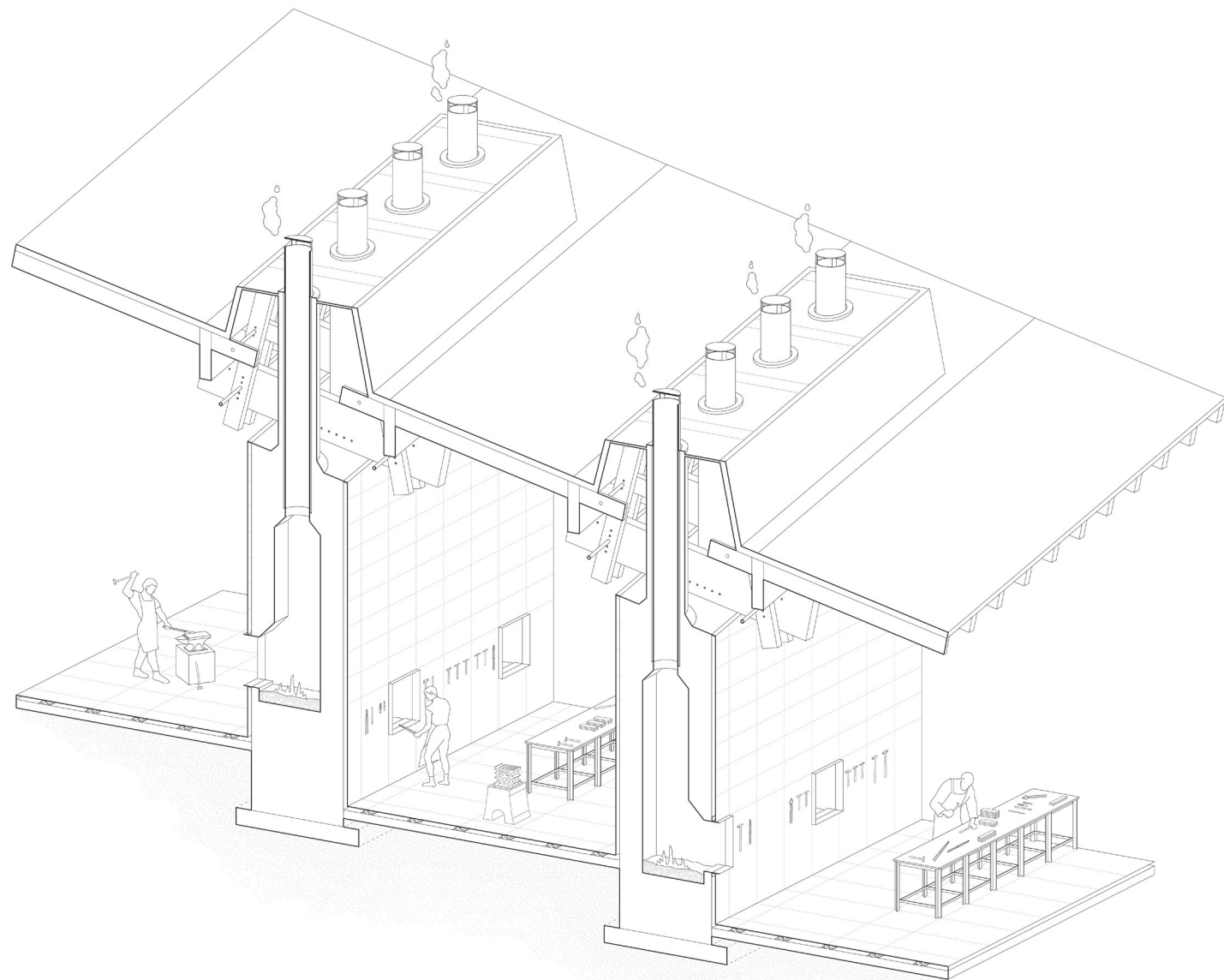
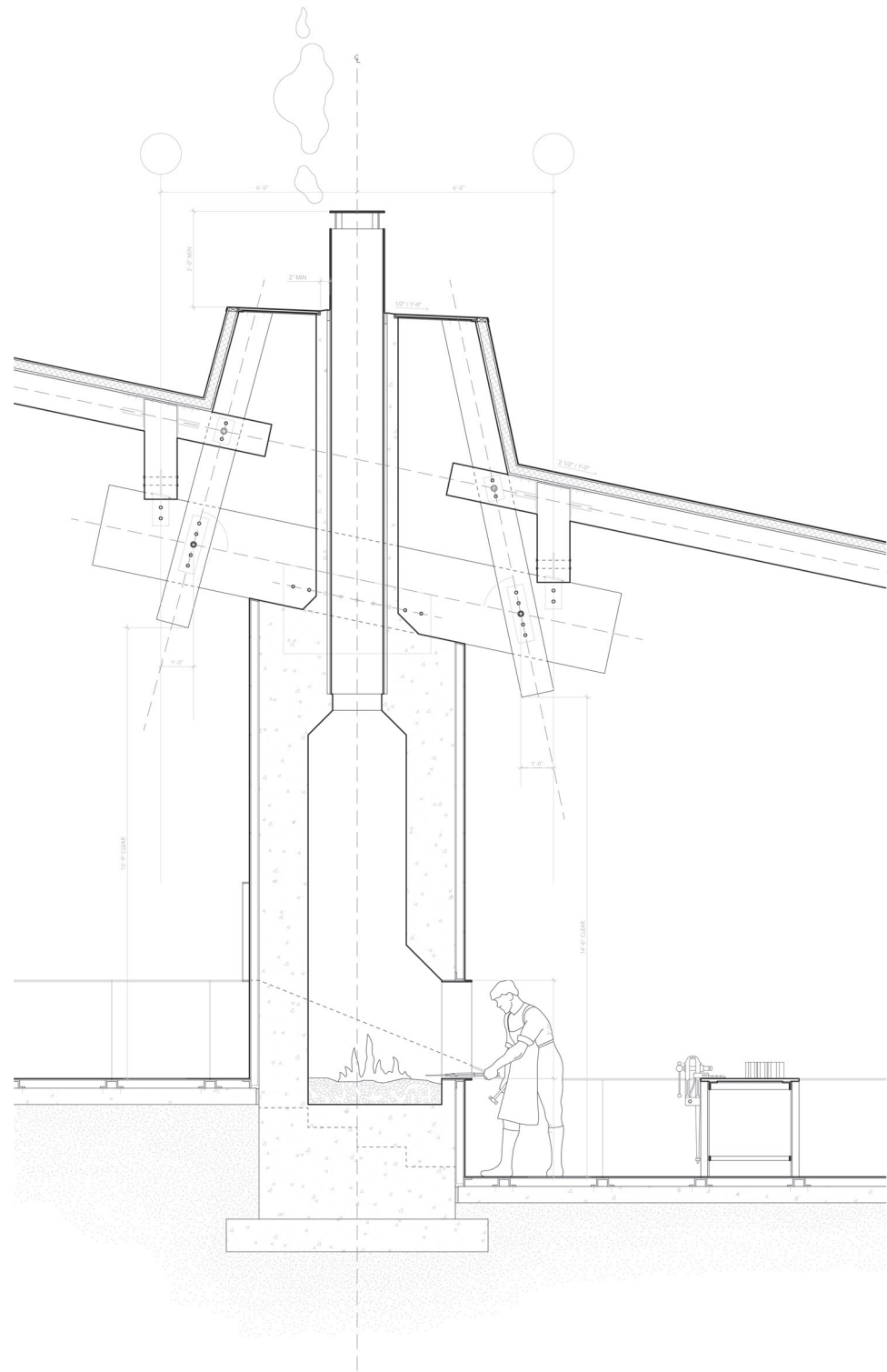














Hammerschmiede / Mühlehorn



Hacheschmiede / Korbach



Herefordshire & Ludlow College / Herefordshire, England



